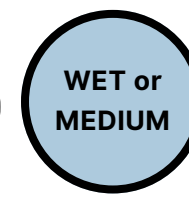
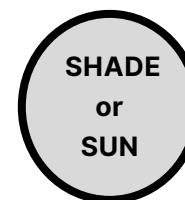


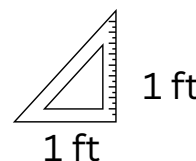
# *Geranium maculatum*

## Wild Cranesbill

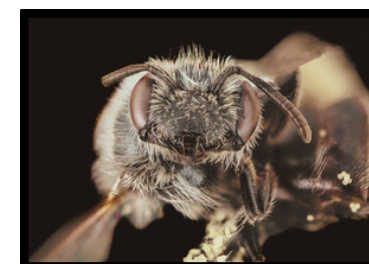


Woodland plant native to the Central and Eastern US with long blooming pink flowers in early summer. Prefers light shade/part sun, moist to slightly dry conditions, and rich loamy soil with abundant organic matter. Also grows in full sun and can tolerate drought.

**Tolerates damage by deer and rabbits.**



**Wildlife Value:** Host plant for *Spilosoma virginica* (Virginian Tiger Moth/ Yellow Woollybear). Supports the specialist bee *Andrena distans* and has special value for native Bumble Bees. Seeds feed Mourning Doves and Bobwhite Quail. Provides nectar for several butterflies.



DISCOVER THE POWER OF NATIVE PLANTS  
BLOOM WILD  
[www.bloom-wild.com](http://www.bloom-wild.com)